



Hello,
I hope that you have had a lovely week.

Reading Volunteers

We are always looking for volunteers to come in and help at school. If you would like to spend an hour or two reading with children, then please come and speak to the school office and we will be in touch with you. Full training will be provided.



Educational Visit Helpers.

If you would like to support on educational visits that take place across The school, please come and speak to the office.



Social Media usage.

A reminder about social media apps and recommended ages.

Please help your children to stay safe online.

Take care and have a lovely weekend,
Miss Rebecca Smith.

OpenView
Education
TRAINING THROUGH THEATRE

APPS AND THEIR AGE RATINGS

13+		16+	
Facebook	Snapchat	WhatsApp	
Instagram	Twitter		
TikTok	Kik	Sarahah	MeetMe
YouNow	Yubo	YOLO	LiveMe
House Party	Monkey		

Congratulations to our badge winners this week...

Macaulay – Eeshaan, Sritha, Koen, Zorawar, Dhruv, Jahneem.

Richmond – Elton.

Hughenden – Charlie, Chloe, Freya & Danny.



Search: KnightonTMET <https://twitter.com/knightontmet>

Please make sure that you follow us on X formerly known as Twitter to keep up to date with news and events but also see what your children are up to whilst in school!

Enquiries: office@knighton-tmet.uk



Date: 06/06/25

Issue: 33

Principal: Miss Rebecca Smith



Monday 9th June – Non uniform day.

Tuesday 10th June – Summer Disco.

Friday 13th June – Non-uniform day.

Wednesday 18th June – Sports Day @ Saffron Lane Stadium – details to follow

Friday 20th June – Summer Fair 2pm – 3pm

Wednesday 9th July – Y6 Picnic in the Park

Friday 11th July – Y6 leavers assembly.

Attendance



A huge congratulations goes to Hughenden class, for amazing attendance and to Lansdowne class for excellent punctuality this week.

Please remember that gates open at **8.40am** and children must be in class by **8.50am**.

Also, please familiarise yourself with NHS guidance on when to keep your child from school.

[Is my child too ill for school? – NHS](#)

Thank you,
Miss Key.

Class	Attendance %
Hawkins	90.94
Bloomfield	91.82
Macaulay	91.67
Lansdowne	93.36
Richmond	94.25
Hughenden	95.93
Lothair	90.42
Whole School Attendance	92.49

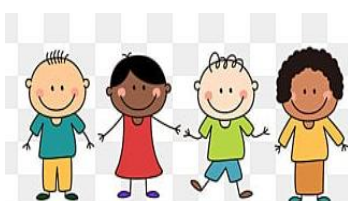


Primary Leadership Team
#collaboration #community

Non-School Uniform Days.

Monday 9th June, donate a bear for the summer fete Tombola.

Friday 13th, donate Chocolate for the summer fete Tombola.



Character muscle of the week

Managing Impulsivity –

Having the control to stop yourself from doing something that may not be appropriate at the time, this involves self-control.



Search: KnightonTMET

<https://twitter.com/knightontmet>

Please make sure that you follow us on X formerly known as Twitter to keep up to date with news and events but also see what your children are up to whilst in school!



KNIGHTON MEAD
PRIMARY ACADEMY

SUMMER FAIR!

Friday 20th June at 2pm till 3pm

**Raffle, Chocolate Tombola,
Bouncy Castle, Face Painting,
Splat the Teacher, Penalty
Shoot out, Teddy Tombola and
much much more...**

**Stalls range from 50p to £2 - please
bring change!!**

Fun for all the family!
EVERYONE'S WELCOME



FRIENDS OF KNIGHTON



SUMMER DISCO

TUESDAY 10Th JUNE

YEARS 1,2&3: 3.00 – 4.00

YEARS 4,5&6: 4.00 – 5.00

TICKETS: £2.50 EACH

(AVAILABLE TO PURCHASE ON MCAS)





LEICESTER CITY
IN THE COMMUNITY

SUMMER FOOTBALL CAMPS



DATE	VENUE	TIME	AGE	PRICE
18 August	AFC Andrews FC, LE2 6FT	9:30–15:00	7-13 (Mixed & GK Camp)	£20
30 & 31 July	Asfordby FC, LE14 3TL	9:30–15:00	7-13	£20
22 August	Wreake Valley Academy, LE7 1LY	9:30–15:00	7-13 (Girls Only)	£20
13, 14 & 15 August	Holmes Park, LE8 6FA	9:30–15:00	7-13 (Mixed & Girls Only)	£20
28 & 29 July 11 & 12 August	Mowbray Rangers FC, LE14 3QX	9:30–15:00	7-13	£20

DISCOUNTS AVAILABLE AT CHECKOUT BEFORE MONDAY 23 JUNE 2025



LEICESTER CITY IN THE COMMUNITY



@LCFC_COMMUNITY



@LCFC_COMMUNITY



SCAN ME

FOR QUERIES, PLEASE EMAIL FOOTBALL.CAMPS@LCFC.CO.UK



FOOTBALL
BOOTS &
TRAINERS



WEATHER
SUITABLE
CLOTHING



BRING
PLENTY
TO DRINK



DON'T FORGET
YOUR SHIN
PADS!



TELL US IF YOU
DON'T WANT YOUR
PHOTO TAKEN

3G PITCHES & SPORTS HALL

BOYS & GIRLS 7-13 YEARS OLD



LEICESTER CITY
IN THE COMMUNITY

SUMMER FOOTBALL CAMPS



DATE	VENUE	TIME	AGE	PRICE
21, 28 & 29 July 4 August	Coalville Town FC, LE67 3DA	9:30-15:00	7-13	£20
22 & 23 July 5 & 6 August 19 & 20 August	Wreake Valley Academy, LE7 1LY	9:30-15:00	7-13	£20
24 & 25 July 7 & 8 August 21 & 22 August	Barwell Football Ground, LE9 8FQ	9:30-15:00	7-13	£20
25 July 1, 8 & 15 August	Fullhurst Community College, LE3 1AH	9:30-15:00	7-13 (Girls Only)	£20
30 & 31 July 1 August	Sileby Town FC, LE12 7WN	9:30-15:00	7-13 (Mixed & Girls Only)	£20

DISCOUNTS AVAILABLE AT CHECKOUT BEFORE MONDAY 23 JUNE 2025



LEICESTER CITY IN THE COMMUNITY



@LCFC_COMMUNITY



@LCFC_COMMUNITY



SCAN ME

FOR QUERIES, PLEASE EMAIL FOOTBALL.CAMPS@LCFC.CO.UK



FOOTBALL
BOOTS &
TRAINERS



WEATHER
SUITABLE
CLOTHING



BRING
PLENTY
TO DRINK



DON'T FORGET
YOUR SHIN
PADS!



TELL US IF YOU
DON'T WANT YOUR
PHOTO TAKEN

3G PITCHES & SPORTS HALL

BOYS & GIRLS

7-13 YEARS OLD



LEICESTER CITY
IN THE COMMUNITY

HAF

SUMMER 2025



SUMMER ACTIVITIES FOR ELIGIBLE CHILDREN AND YOUNG PEOPLE

Booking Deadline: June 27, 2025

Session	Location	Date	Age & Time
YOUTH CLUB	1884 Sports Bar, King Power Stadium	21 – 24 July Mon - Thurs	(Age 5-10) 9.30am-1.30pm (Age 11-16) 12.30pm-4.30pm
LEGO & E-SPORTS	1884 Sports Bar, King Power Stadium	28 - 31 July Mon - Thurs	(Age 5-10) 9.30am-1.30pm (Age 11-16) 12.30pm-4.30pm
PREMIER LEAGUE KICKS	King Power Stadium, St Margaret's Pastures	4 – 7 August Tues - Fri	(Age 7-11) 10am – 2pm
ACTIVE GIRLS (GIRLS ONLY)	1884 Sports Bar, King Power Stadium	11 – 14 August Mon - Thurs	(Age 5-10) 9.30am-1.30pm (Age 11-16) 12.30pm-4.30pm
SNOW CAMP (GIRLS ONLY)	King Power Stadium, Tamworth Snowdome	21 – 22 August Thurs - Fri	(Age 14-16) 8.30am-5.30pm
YOUTH CLUB	1884 Sports Bar, King Power Stadium	18 – 21 Aug Mon - Thurs	(Age 5-10) 9.30am-1.30pm (Age 11-16) 12.30pm-4.30pm



SCAN QR CODE TO REGISTER OR EMAIL TINA.SHAH@LCFC.CO.UK

HAF IS FREE PROVISION TO ALL CHILDREN AND YOUNG PEOPLE IN RECEIPT OF BENEFITS RELATED FREE SCHOOL MEALS, PLACES ARE SUBJECT TO ELIGIBILITY CHECKS



Department
for Education



LEICESTER CITY IN THE COMMUNITY



@LCFC_COMMUNITY



@LCFC_COMMUNITY



LEICESTER CITY
IN THE COMMUNITY

To exit full screen, press **Esc**

MULTI-SPORTS CAMPS

SUMMER HOLIDAY MULTI-SPORTS CAMPS

A RANGE OF SPORTS ACTIVITIES | ARTS & CRAFTS
AGES 5-11

WEEK 1

21 – 25 JULY (5 Days)

9:00 – 15:30



SOAR VALLEY LEISURE CENTRE

Kingfisher Rd, Mountsorrel,
Loughborough LE12 7FG

WEEK 2

28 JULY – 1 AUGUST (5 Days)

9:00 – 15:30

WEEK 3

4 – 8 AUGUST (5 Days)

9:00 – 15:30

WEEK 4

11 – 15 AUGUST (5 Days)

9:00 – 15:30

Bring a packed lunch, plenty of water, and
make sure to wear sun cream and a hat!



£20 PER DAY, OR £90 WHEN BOOKING A FULL WEEK



SCAN THE QR CODE TO BOOK
FOR QUERIES, PLEASE EMAIL TILLY.HIGGS@LCFC.CO.UK