



Hello,

Thank you for all of your support with Comic Relief today. We will let you know how much we have raised very soon.

This week has been filled with fun and laughter as we found out which class was the funniest. You can find out the winner on X.

You said, we listened...

In the Parent Survey that we conducted during Parents' Evening week, many of you told us that you would like to know more about what the children are learning about in school. This is a reminder that each class has a Tapestry page and learning is regularly updated on there. Also, follow us on X to find out lots about what is going on in the school.

As some of you may have noticed, Miss Chikaponya is having a baby. She will be starting her maternity leave after Easter and Mrs Tank and Mrs Shand will be working in Richmond Class (Year 3). Mrs Shand currently works at Fosse Mead, which is in TMET - our family of Schools - and has lots of experience of teaching children. We look forward to her joining the Knighton Mead team.



REMINDER:

We will be holding our annual **Spring Bonnet Parade on Friday the 22nd March at Aylestone Recreational Ground (weather permitting) at 9:20am.** Children are invited to **make bonnets at home and there will be a competition** to select the best one.

Children may also **decorate an egg and bring that in to be judged on the 22nd March.**

REMINDER:

We extend a warm invitation to you, our school community, to join us at our visioning session on Tuesday 19th March at 3:30pm and help shape #TMET2030, our next six-year strategy. By helping shape our future, you can choose to be entered into a prize draw to win one of three £50 Love2shop vouchers.

Have a great week.

Miss Rebecca Smith.

**FRIENDS OF
KNIGHTON**



CHOCOLATE BINGO

THURSDAY 21ST MARCH

START TIME: 3.30

TICKETS: £2 PER PERSON

(AVAILABLE TO PURCHASE FROM THE OFFICE)



**FRIENDS OF
KNIGHTON**



**FAMILY EASTER TREASURE
HUNT**

MONDAY 18TH MARCH

START TIME: 3.30

TICKETS: £2 PER FAMILY

MONEY RAISED WILL BE DONATED TO COMMUNITY WISHES

(AVAILABLE TO PURCHASE FROM THE OFFICE)



Search: KnightonTMET <https://twitter.com/knightontmet>

Please make sure that you follow us on X, formerly known as Twitter, to keep up to date with news and events but also see what your children are up to whilst in school!

Enquiries: office@knighton-tmet.uk



Date: 15.03.24

Issue: 24

Principal: Miss Rebecca Smith



Monday 18th March – Easter family treasure hunt – tickets £2 per family from the office

Tuesday 19th March – TMET2030 visioning meeting

Wednesday 20th March – Spring Disco – sign up on the MCAS app

Thursday 21st March – Family Chocolate Bingo – tickets – £2 per person from the office

Friday 22nd March – Spring Bonnet Parade at Aylestone Recreational Ground – 9:30am

Friday 22nd March – school closes to children

Monday 8th April – school reopens to children

Attendance



A huge congratulations goes to Sheridan Class this week for amazing attendance and a congratulations also goes to Bloomfield Class for amazing punctuality this week.

Please remember that gates open at **8.40am** and children must be in class by **8.50am**.

Please keep up your hard work with your attendance and punctuality. Many thanks.

Miss Key.

Class	Attendance %
Bloomfield	94.1%
Macaulay	95.5%
Lansdowne	91.5%
Richmond	96.1%
Hughenden	88.9%
Lothair	92.7%
Sheridan	97.4%
Whole School Attendance	94%

Congratulations to all of our badge winners this week:

Hughenden

Jenson – Second round green

Humayra – Second round green

Lano – Second round green

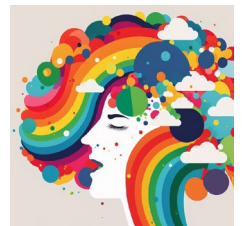
Chloe – Second round green



Character muscle of the week

Creativity:

Forming new ideas, images or thoughts. Thinking outside of the box. .



Friends of Knighton #collaboration #community



The next full meeting is on the 12th April at 9:00am. We would love to see lots of you there to contribute your ideas on how to make the school a better place.

Join us on Tuesday 19th March at 3:30pm
(please let the school office know if you will be attending)



#TMET2030

Help shape our future

We and all the schools in TMET are committed to making a meaningful impact. **We believe that together we make a positive difference.** Join us in shaping #TMET2030, our next six-year strategy, and be in with a chance to win a £50 Love2Shop voucher.

Learn more at www.tmet.uk/about-us/tmet2030/



Deadline for response



LEICESTER CITY WOMEN v BRIGHTON WOMEN

Sunday 24 March 2024
3pm Kick Off

KING POWER STADIUM

SCHOOLS TICKET OFFER!

Leicester City Women host Brighton & Hove Albion Women on home soil at King Power Stadium in the Barclays Women's Super League on Sunday 24 March (3pm KO). The tie is part of the FA's Women's Football Weekend, which encourages new and existing fans to celebrate the game by attending fixtures across the women's pyramid and will see a host of special activations take place at King Power Stadium for this game

The support of our local football community is always appreciated, so in recognition of our valued partner schools from around the county, LCFC is offering 50% off adult tickets for the WSL encounter at King Power Stadium on Sunday 24 March (3pm kick-off).

	STANDARD PRICES	SCHOOLS OFFER PRICES
Adult	£8	£4
Senior (65+)	£4	£4
Under 18	£4	£4
Under 8	FREE	FREE

USE CODE:

SCHOOL

OTHER INFORMATION

- Tickets will be subject to a £2 increase on matchday, so act early to get the best price!

VISIT [LCFC.COM/TICKETS](https://www.lcfc.com/tickets) TO BUY

FREE Museum Holiday Club this Easter

#HAF2024

The Museum Holiday Club offers fun activities and a healthy lunch each day over the school Easter holidays. We will be doing lots of arts and crafts activities, games and street dance, as well as exploring the King Richard III Visitor Centre.

When:

10am – 3pm

Monday 25th – Thursday 28th March 2024

or

Tuesday 2nd – Friday 5th April 2024

Who:

Museum Holiday Club is free for children aged 7-11 years old who attend a Leicester City school and are in receipt of benefits related free school meals.

Where:

King Richard III Visitor Centre

4a St Martins

Leicester

LE1 5DB

Find out more on our website:

